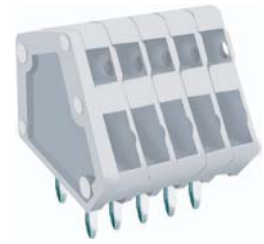
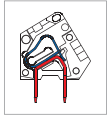


# MWX100 PCB Spring Type Terminal Block



DIMENSIONS/POSITIONS		MWX100-250	MWX100-254
間距	Pitch	2.50mm	2.54mm
位數	Poles	2 ~ 24Poles	2 ~ 24Poles
塑膠本體	Housing Material	PA 66	PA 66
端蓋	Cover	PA 66	PA 66
端子	Contact	Brass, Tin Plated	Brass, Tin Plated
彈片	Spring	Stainless Strip Steel	Stainless Strip Steel
電線線徑	Wire Size	20 ~ 28AWG	20 ~ 28AWG
剝線長度	Wire Strip Length	5mm ~ 6mm	5mm ~ 6mm
PCB孔徑	PCB Hole Diameter	1.3mm	1.3mm
環境作業溫度	Operating Temperature	-40°C to +105°C	-40°C to +105°C

## TECHNICAL DATA

連接符合標準 Connection in acc. with standard EN-VDE			
額定電流 I <sub>n</sub>	Nominal Current I <sub>n</sub>	6A	6A
額定橫截面	Nominal Cross Section	0.5mm <sup>2</sup>	0.5mm <sup>2</sup>
最大負載電流	Maximum load current	6A	6A
絕緣材料	Insulating Material	PA	PA
阻燃等級,符合UL94 Inflammability class acc. to UL94		V0	V0
額定電壓,UL/CUL Nominal voltage, UL/CUL		150V	150V
額定電流,UL/CUL Nominal current, UL/CUL		4A	4A

