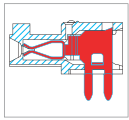
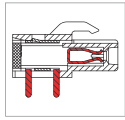


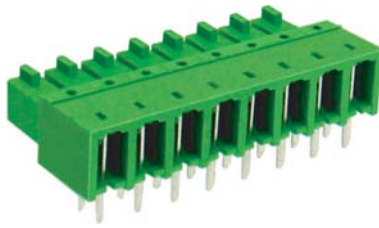
MF203 Connector



ME203-381



ME203-508

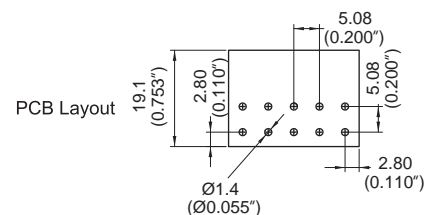
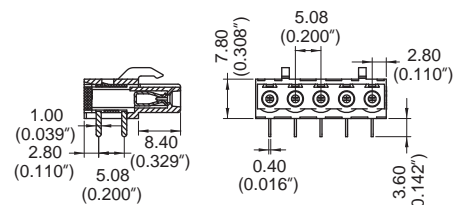
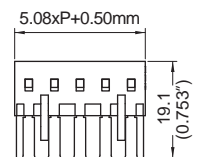
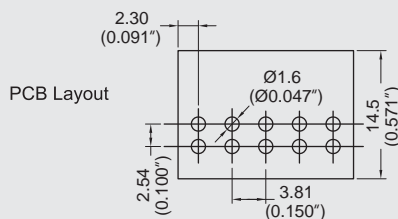
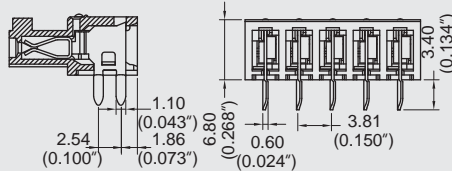
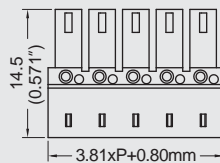


DIMENSIONS/POSITIONS

DIMENSIONS/POSITIONS		MF203-381	MF203-508
間距	Pitch	3.81mm	5.08mm
位數	Poles	2 ~ 24Poles	2 ~ 24Poles
塑膠本體	Housing Material	PA 66	PA 66
夾片	Wire Protector	Phosphor Bronze, Tin Plated	Phosphor Bronze, Tin Plated
PCB孔徑	PCB Hole Diameter	1.6mm	1.4mm
環境作業溫度	Operating Temperature	-40°C to +105°C	-40°C to +105°C

TECHNICAL DATA

連接符合標準 Connection in acc. with standard EN-VDE			
額定電流 I _N	Nominal Current I _N	7A	11A
額定橫截面	Nominal Cross Section	-	-
最大負載電流	Maximum load current	7A	11A
絕緣材料	Insulating Material	PA	PA
阻燃等級,符合UL94 Inflammability class acc. to UL94		V0	V0
額定電壓,UL/CUL Nominal voltage, UL/CUL		300V	300V
額定電流,UL/CUL Nominal current, UL/CUL		7A	11A



MF